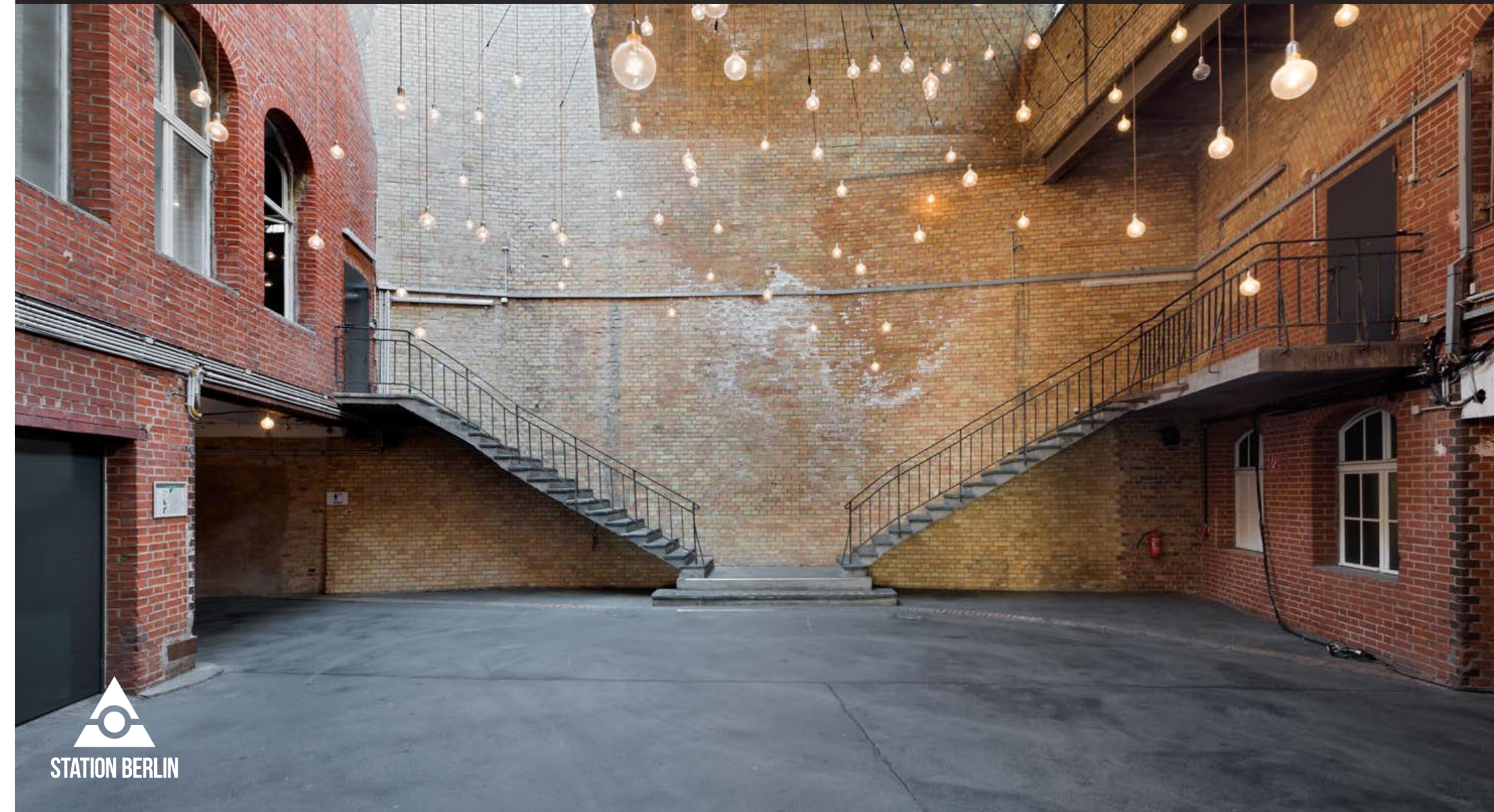


VIADUCT

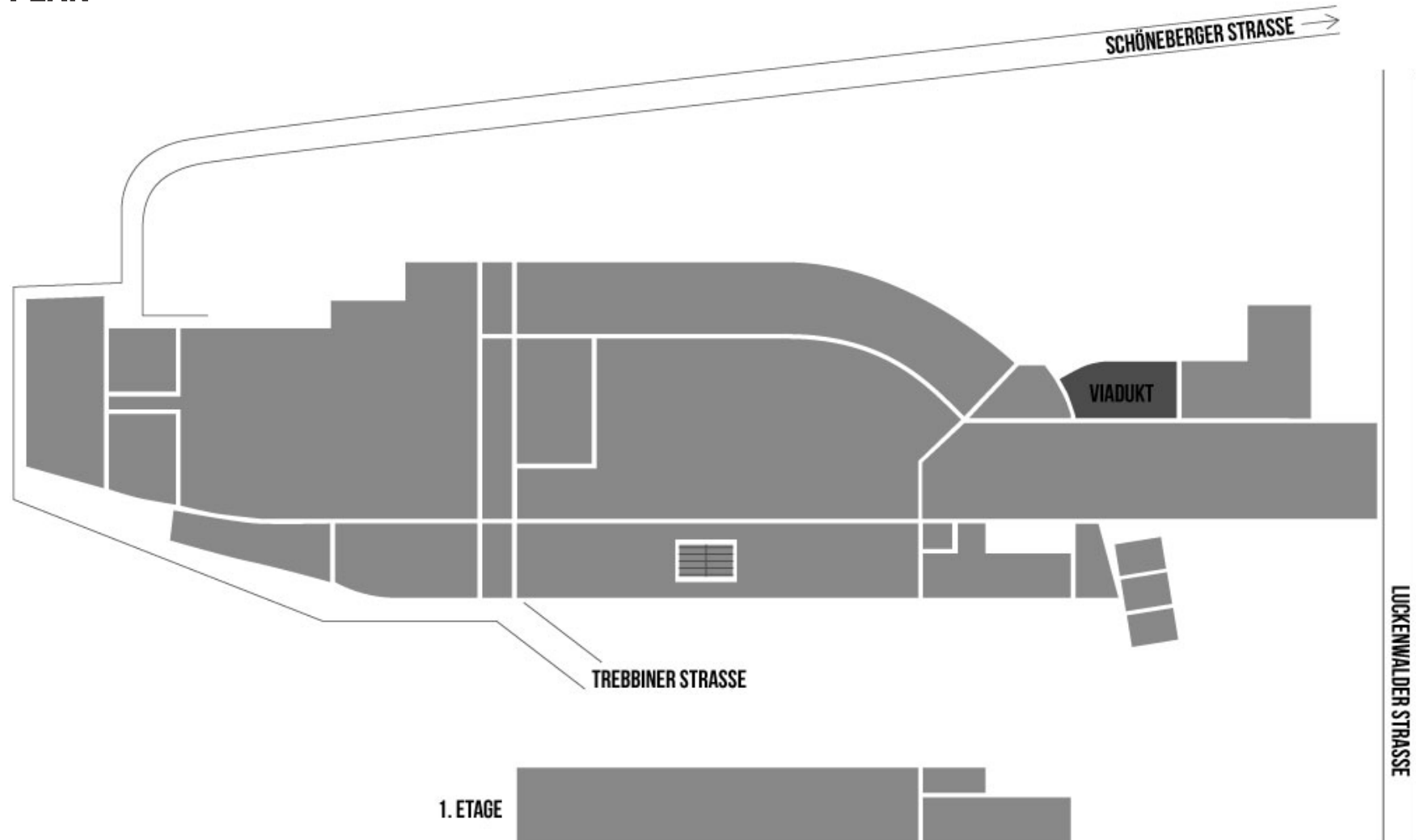
STATION-BERLIN | EIGHT HALLS, 23.000 SQUARE METRES OF SPACE. INFINITE POSSIBILITIES.

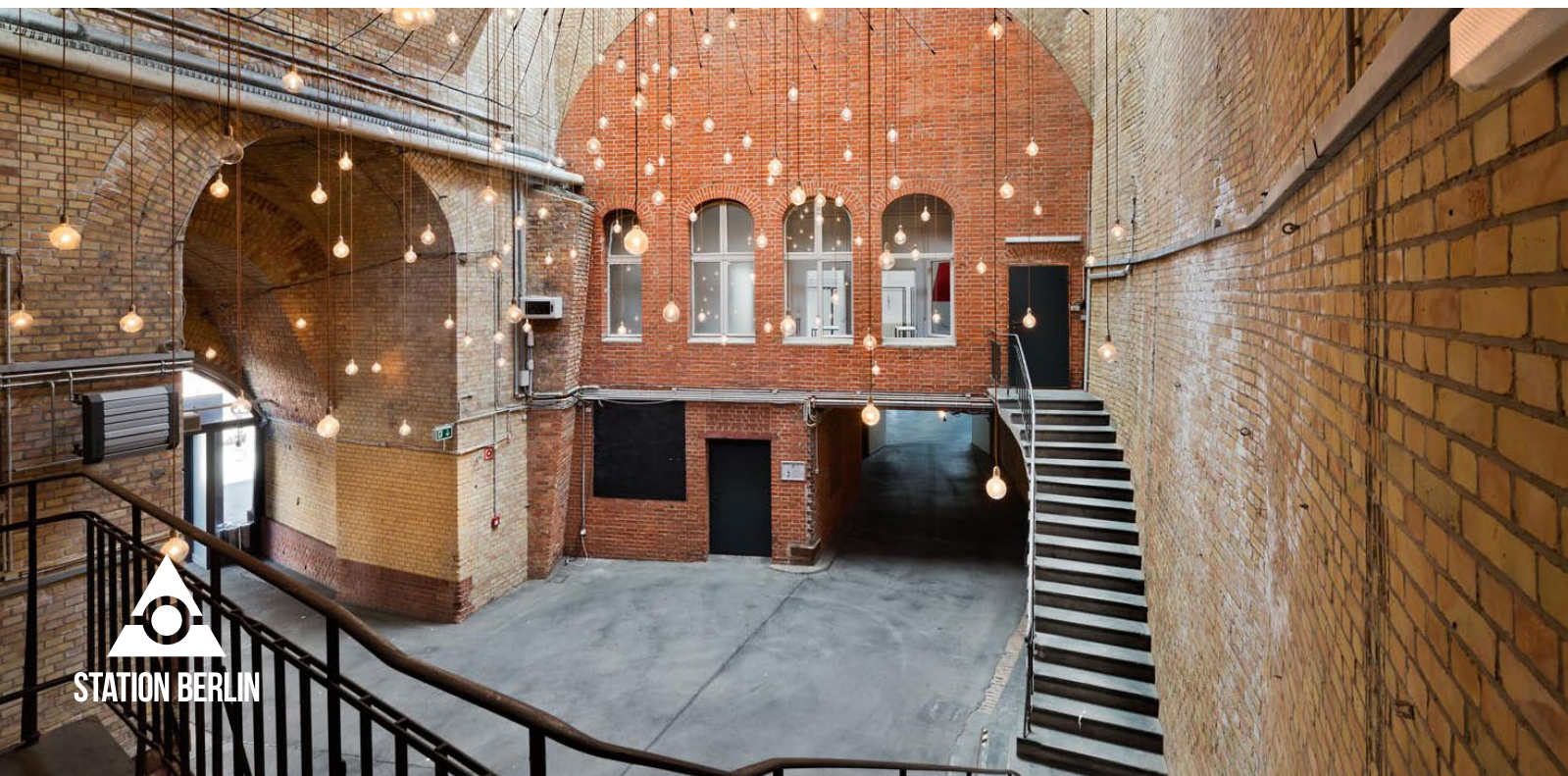


STATION BERLIN

VIADUCT

GROUND PLAN

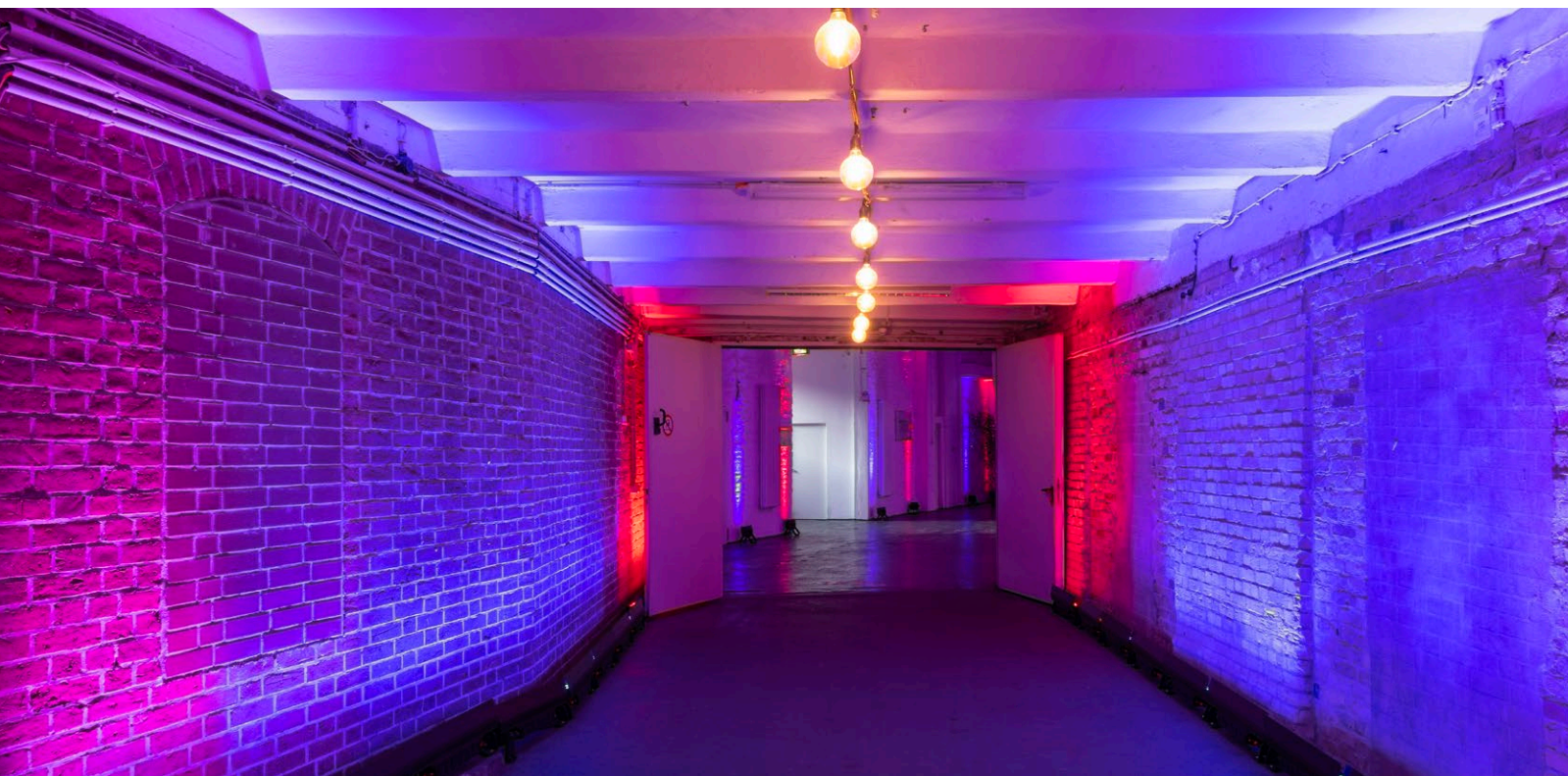




VIADUCT

INFO

Exclusive events deserve exclusive spaces. The Viaduct is an impressive foyer for Hall 1 and truly one-of-a-kind. And not just in Berlin.

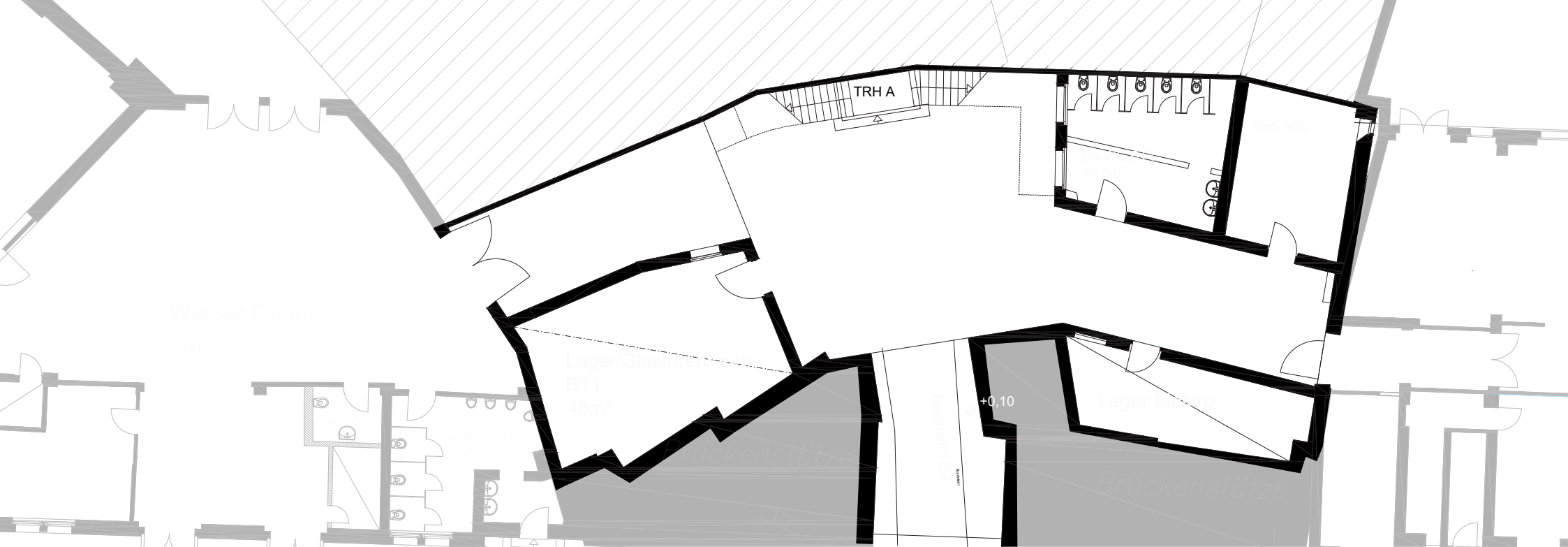


VIADUCT

USE

With its clearance height of 11,20m, this structure embodies an industrial architecture of virtually ecclesiastical proportion.

Simultaneously, the walls of historic masonry imbue it with warmth and intimacy.



VIADUCT

FACTS

Floor space	182 sqm
Clearance height	11,20 m
Level	Ground Floor
Barrier-free access	Yes
Disabled toilet	Yes

SEATING

Without seating	100 Standing
-----------------	--------------

OTHER

Power	Yes
Water	Yes
LAN/WiFi	Yes/Yes
Truck/car access (via ramp)	No/Yes
Heating/Cooling	Yes/No
Blackout	No